



REQUEST FOR QUOTATION

(For Infrastructure Projects)

Company Name/TIN: _____
 Business Address: _____

Date: April 04, 2024
 PR No: 2024-03-0173

Please quote your lowest price on the item/s listed below, subject to the terms and conditions stipulated, and submit your quotation duly signed by your representative not later than **April 08, 2024; 05:00 P.M** in the return envelope to the BAC Secretariat, DSSC, Matti, Digos City, or email to psu@dssc.edu.ph.

TERMS AND CONDITIONS:	
1.	Completion of Works: <u>60</u> calendar days from receipt of Purchase Order.
2.	Price validity: <u>120</u> calendar days
3.	Documentary requirements: PhilGEPS Reg. Number, Mayor's Permit, PCAB License, SEC/DTI Cert., BIR Cert. of Reg., Omnibus Sworn Statement, & Income/Business Tax Return (For ABCs above P500K)
4.	The Approved Budget for the Contract for this procurement is, Php 88,873.86


RACHEL R. YONTING
 Procurement Service Unit Head/BAC Secretariat

Item No.	Qty.	Unit	Item Description	ABC per Item	Unit Cost	Total Cost
1	1	Lot	Repair of COA Office and Stockroom (with attachments: Detailed plan, Detailed cost estimates and Scope of Work)		88,873.36	
GRAND TOTAL:						

Completion of Works: _____
 Price Validity : _____

After having carefully read and accepted your General Conditions, I/We quote you on the item/s at prices noted above. If the space for delivery period, warranty, and price validity are left blank, it means that I/ We concur with the terms and conditions specified by the Davao del Sur State College (DSSC).

Canvasser

Printed Name and Signature
 Contact Details:
 Landline: _____
 Mobile No. _____
 E-mail address: _____
 Date signed: _____

Name of Project: REPAIR OF COA OFFICE AND STOCKROOM AREA

Location: DSSC – Digos Campus, Matti, Digos City

SCOPE OF WORK

EXCAVATION WORKS

- Structural Excavation for combined footing. (Refer to plan)
- Embankment (Refer to plan)
- Gravel fill. (Refer to plan)

STRUCTURAL STEEL WORKS

- Structural steel works. (Refer to plan)

PLAIN AND REINFORCED CONCRETE WORK

- Cutting and bending of deformed bars for concrete combined footing and pedestals. (Refer to plan)
- Fabricate concrete combined footing and pedestals forms.
- Install deformed bar reinforcements on concrete combined footing and pedestal. (Refer to plan)
- Concrete pouring on concrete combined footing and pedestals. (Structural Concrete: 20.7MPa Compressive Strength at 28 days)


TILES WORKS


- Install 60x60cm glazed Tile.
- Use Tile Grout (same color of tiles) for sealing of all connections/joints.

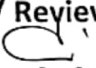
PAINTING WORKS


- Apply Sika Grout 112PH for wall cracks and joints
- Apply body filler for holes and uneven surfaces for concrete.
- Apply minimum of two (2) coats of semi-gloss latex paint for concrete surfaces.
- Apply glazing putty for wooden surfaces.
- Apply of two (2) coats quick dry enamel for wooden surfaces.

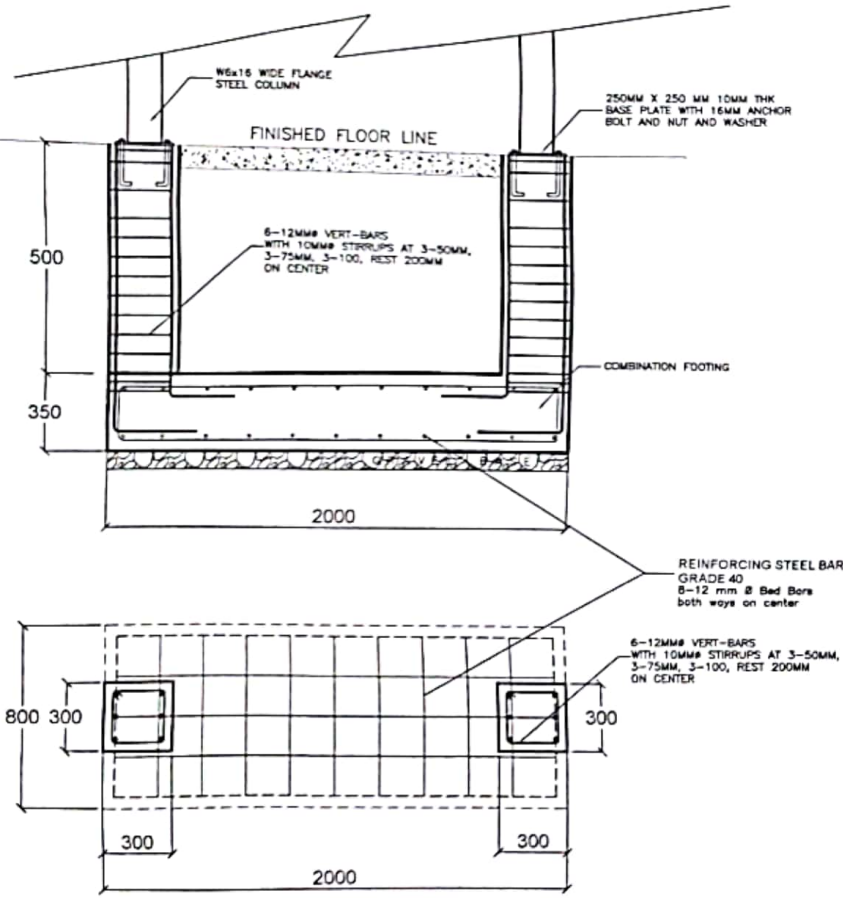
- Apply of two (2) coats quick dry enamel for wooden surfaces.
- Apply body filler for holes and uneven surfaces for concrete.
- Apply metal primer.
- Apply 2coats automotive enamel paint

Prepared by:

Engr. Von L. Del Rosario
PDO STAFF

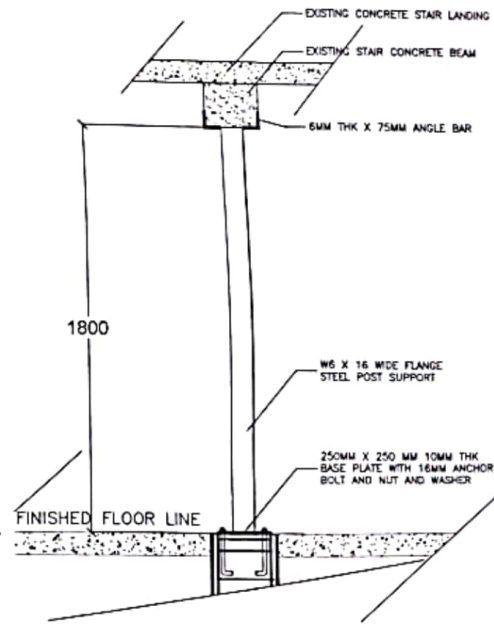
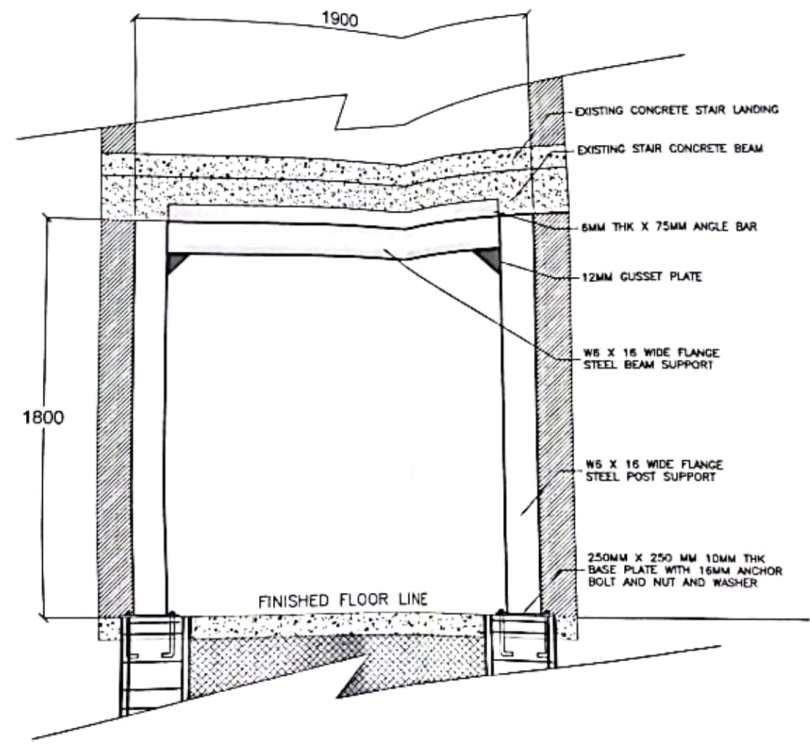
Checked/ Reviewed by:

Engr. Bon Andrey L. Armamento
PDO II

Checked/ Reviewed by:

Engr. Clara A. Acebes
PPDME DIRECTOR

Approved by:

Augie E. Fuentes, PhD.
COLLEGE PRESIDENT



COMBINED ON FOOTING DETAIL
SCALE: 1:15 MTS



STEEL POST AND BEAM SUPPORT DETAIL
SCALE: 1:15 MTS

COL LOGO:	PROJECT TITLE:	PREPARED BY:	CHECKED AND REVIEWED BY:	RECOMMENDING APPROVAL:	APPROVED BY:	SHEET CONTENTS:	SHEET NO:
	REPAIR OF COA OFFICE AND STOCKROOM AREA	 ENGR. VON L. DEL ROSARIO PROJECT MANAGER	 ENGR. BONIFACIO L. ARMAMENTO PROJECT MANAGER	 ENGR. CLARA A. ACEBES PROJECT DIRECTOR	 ENGR. EUGENIO FUENTES, PhD CONSULTANT PRESIDENT	AS INDICATED	