



REQUEST FOR QUOTATION

(For Infrastructure Projects)

Company Name/TIN: _____
 Business Address: _____

Date: August 19, 2024
 PR No: 2024-08-0467

Please quote your lowest price on the item/s listed below, subject to the terms and conditions stipulated, and submit your quotation duly signed by your representative not later than **August 22, 2024; 05:00 P.M** in the return envelope to the BAC Secretariat, DSSC, Matti, Digos City, or email to psu@dssc.edu.ph.

TERMS AND CONDITIONS:

- Completion of Works:** 75 calendar days from receipt of Purchase Order.
- Price validity:** 120 calendar days
- Documentary requirements:** PhilGEPS Reg. Number, Mayor's Permit, PCAB License, SEC/DTI Cert., BIR Cert. of Reg., Bill of Quantities, Detailed Estimate, Omnibus Sworn Statement, & Income/Business Tax Return (For ABCs above P500K)
- The Approved Budget for the Contract for this procurement is, **Php 993,476.55**


RACHEL R. YONTING
Procurement Service Unit Head/BAC Secretariat

Item No.	Qty.	Unit	Item Description	ABC per Item	Unit Cost	Total Cost
1	1	Lot	Installation of 36" dia. RCPC for Storm Drainage System in Site Development Area	993,476.55		
GRAND TOTAL:						

Completion of Works: _____
Price Validity : _____

After having carefully read and accepted your General Conditions, I/We quote you on the item/s at prices noted above. If the space for delivery period, warranty, and price validity are left blank, it means that I/ We concur with the terms and conditions specified by the Davao del Sur State College (DSSC).

Canvasser

Printed Name and Signature
 Contact Details:
 Landline: _____
 Mobile No. _____
 E-mail address: _____
 Date signed: _____



Name of Project: **INSTALLATION OF 36" DIA. RCPC FOR STORM DRAINAGE SYSTEM**

Location: **DSSC – Digos Campus, Matti, Digos City**

SCOPE OF WORK

SURVEY WORKS

- Locate and determine the location and difference elevation from entry point to outlet using dumpy level instrument.
- Lay-out and clearing works.

EARTHWORKS

- Structural Excavation (wingwall, culvert and catch basin). **(Refer to plan)**
- Embankment after laying of RCPC. **(Refer to plan)**
- Gravel fill including weep holes and drainage pipes. **(Refer to plan)**

PLAIN AND REINFORCED CONCRETE WORK

- Cutting and bending of deformed bars for wingwall and catch basin. **(Refer to plan)**
- Fabricate wingwall and catch basin forms.
- Install deformed bar reinforcements on concrete pile cap, footings, wall footing and slab on fill.
- Concrete pouring on concrete wingwall and catch basin. (Structural Concrete: 20.7MPa Compressive Strength at 28 days)

INSTALLATION WORKS

- Installation of 36" diameter conc culvert with collar. **(Refer to plan)**

STEEL WORKS

- Fabrication and installation of steel cover. **(Refer to plan)**

CARPENTRY WORKS

- Scaffolding and form work for wingwall and catch basin. **(Refer to plan)**

Prepared by:

Engr. Von L. Del Rosario
PDO STAFF

Checked/ Reviewed by:

Engr. Bon Andrey L. Armamento
PDO II

Checked/ Reviewed by:

Engr. Clara A. Acebes
PPDME DIRECTOR

Approved by:

Augie E. Fuentes, PhD.
COLLEGE PRESIDENT





Name of the Project: **INSTALLATION OF 36" DIA. RCPC FOR STORM DRAINAGE SYSTEM**
 Location: **SITE DEVELOPMENT AREA, DAVAO DEL SUR STATE COLLEGE - DIGOS CAMPUS**
 Scope of Work: **As per Item Number**

PROJECT DURATION : 75 CALENDAR DAYS

BILL OF QUANTITIES

ITEM NO.	ITEM DESCRIPTION	QUANTITY	UNIT	UNIT COST	AMOUNT
1	Culvert Installation	142.00	meters		
3	Construction of 8 units Catch Basin	11.52	cu.m.		
3	Construction of 2 units Wingwall	0.39	cu.m.		
3	Formworks and Falseworks	107.58	sq.m.		
3	Equipment Rental for Excavation and backfilling (Volume = 511.20 cu.m.)	511.20	cu.m.		
				GRAND TOTAL	-

Prepared by:

ENGR. VON L. DEL ROSARIO
 PDO-STAFF

Checked/ Reviewed by:

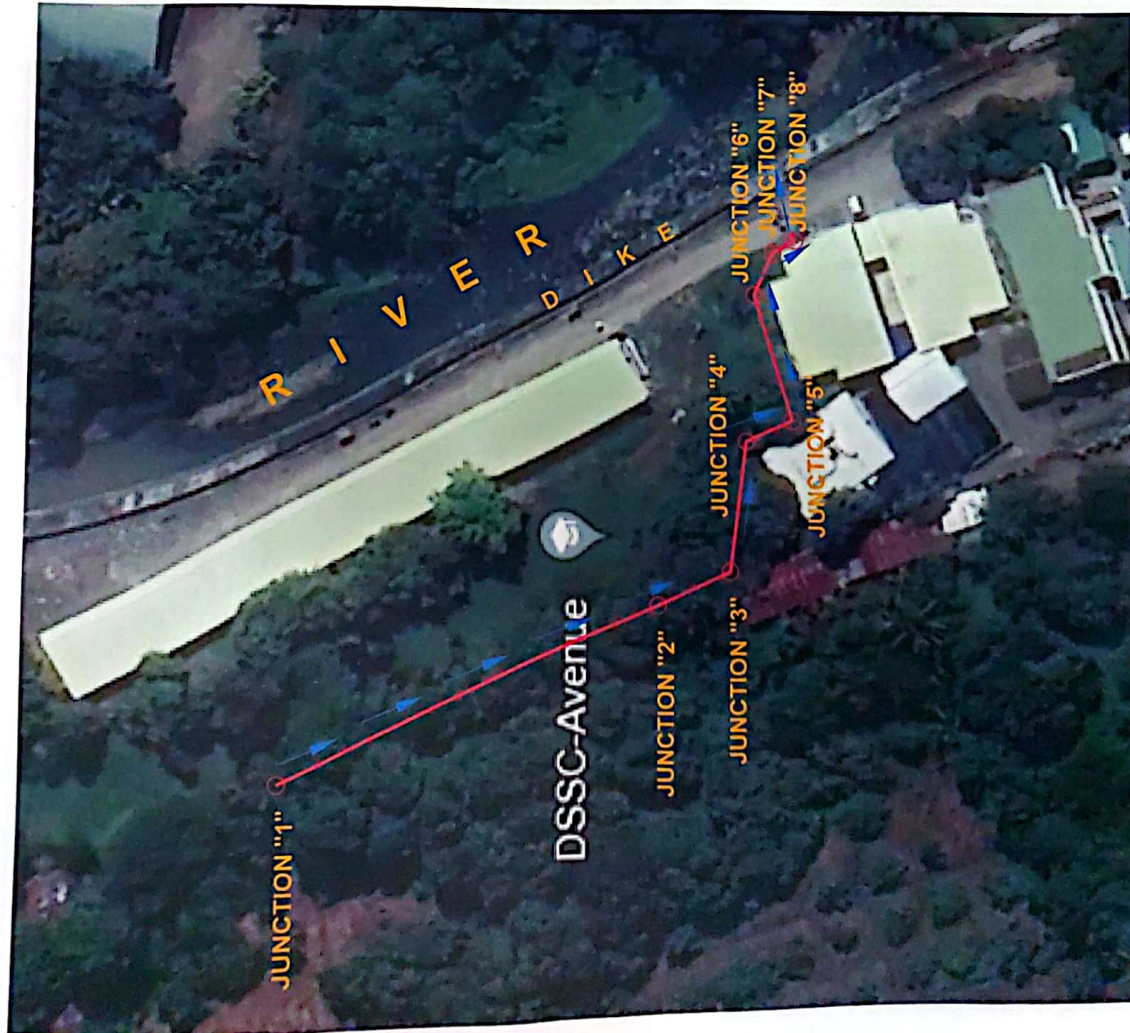
ENGR. BON ANDREY L. ARMAMENTO
 PDO II

Recommending Approval:

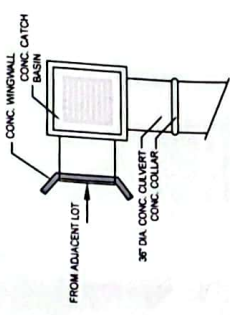
ENGR. CLARA A. ACEBES
 PPDME DIRECTOR

Approved by:

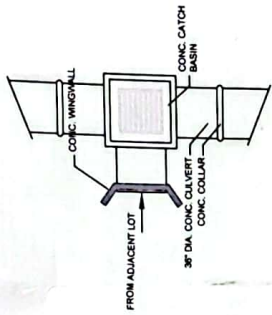
AUGIE E. FUENTES, Ph.D.
 COLLEGE PRESIDENT



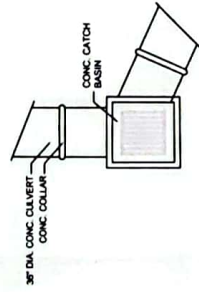
LOCATION MAP



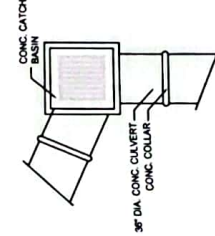
JUNCTION "1"
SCALE: 1/60 MTS



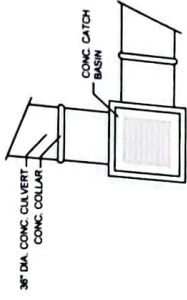
JUNCTION "2"
SCALE: 1/60 MTS



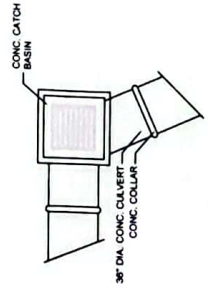
JUNCTION "3"
SCALE: 1/60 MTS



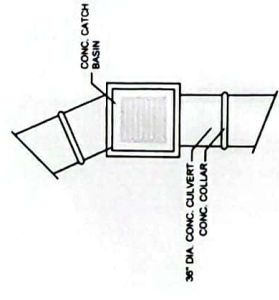
JUNCTION "4"
SCALE: 1/60 MTS



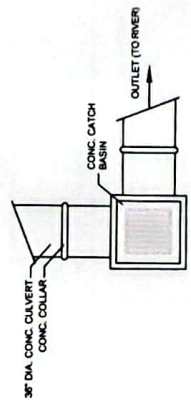
JUNCTION "5"
SCALE: 1/60 MTS



JUNCTION "6"
SCALE: 1/60 MTS



JUNCTION "7"
SCALE: 1/60 MTS



JUNCTION "8"
SCALE: 1/60 MTS

	PROJECT TITLE INSTALLATION OF 36" DIA. RCPC FOR STORM DRAINAGE SYSTEM LOCATION: DAVAO DEL SUR STATE COLLEGE CAMPUS, BRGY. MATTI, DIGOS CITY, DAVAO DEL SUR	PREPARED BY:  ENGR. NON DEL ROSARIO PEO STAFF	CHECKED AND REVIEWED BY:  ENGR. BON ARREY L. ARMAMENTO PEO II	RECOMMENDING APPROVAL:  ENGR. CLARA A. ACEBES PHDME - DIRECTOR	APPROVED BY:  AUGIE E. FUENTES, PHD COLLEGE PRESIDENT	SHEET CONTENTS: AS INDICATED
---	---	---	---	--	---	---------------------------------

